

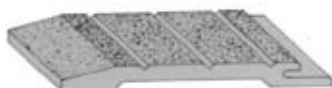


MODERN ENGINEERED PRODUCTS, INC.

Door Thresholds

Abrasive cast metal

Cast abrasive-surfaced door thresholds provide safe footing at entrances for the life of a building. The designs shown here are the most popular. They can be factory notched to fit door jambs, eliminating costly field labor. Thresholds are ready for immediate installation, with holes factory drilled and countersunk.



STYLE 809

Weatherstrip type
Standard height $\frac{1}{2}$ "
Standard widths 4" 5" 6"



STYLE 819

Weatherstrip type
Standard height $\frac{3}{8}$ "
Standard widths 4" 5" 6"



STYLE 810

Standard height $\frac{3}{8}$ "
Width to order up to 18"



STYLE 814

Standard height $\frac{3}{8}$ "
Standard widths 4" 5" 6"



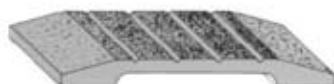
STYLE 811

Standard height $\frac{1}{2}$ "
Standard widths 4" 5" 6"



STYLE 815M

Standard height $\frac{1}{2}$ "
Standard widths 4" 5" 6"



STYLE 815

Standard height $\frac{1}{2}$ "
Standard widths 4" 5" 6"



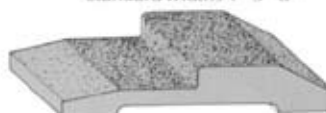
STYLE 812

Height under door $\frac{3}{8}$ "
Door stop height $\frac{1}{2}$ "
Standard widths 4" 5" 6"



STYLE 813

Height under door $\frac{3}{8}$ "
Door stop height $\frac{3}{8}$ "
Standard widths 4" 5" 6"



STYLE 815S

Height under door $\frac{1}{2}$ "
Door stop height $\frac{3}{8}$ "
Standard widths 4" 5" 6"